f-machine

Should you have any issues with your F-Machine or require spare parts,
please contact your nearest F-Machine retailer or email us directly at sales@f-machine.com

Thanks for your purchase of the F-Machine.
'F' stands for **Fun** (honest) and that is exactly what the F-Machine was designed for, FUN.

We have taken the utmost care in designing your F-machine and we hope that it will service you and your friends for many years to come. Should you have any issues with your F-Machine or require spare parts, please contact your nearest F-Machine retailer or email us directly at sales@f-machine.com

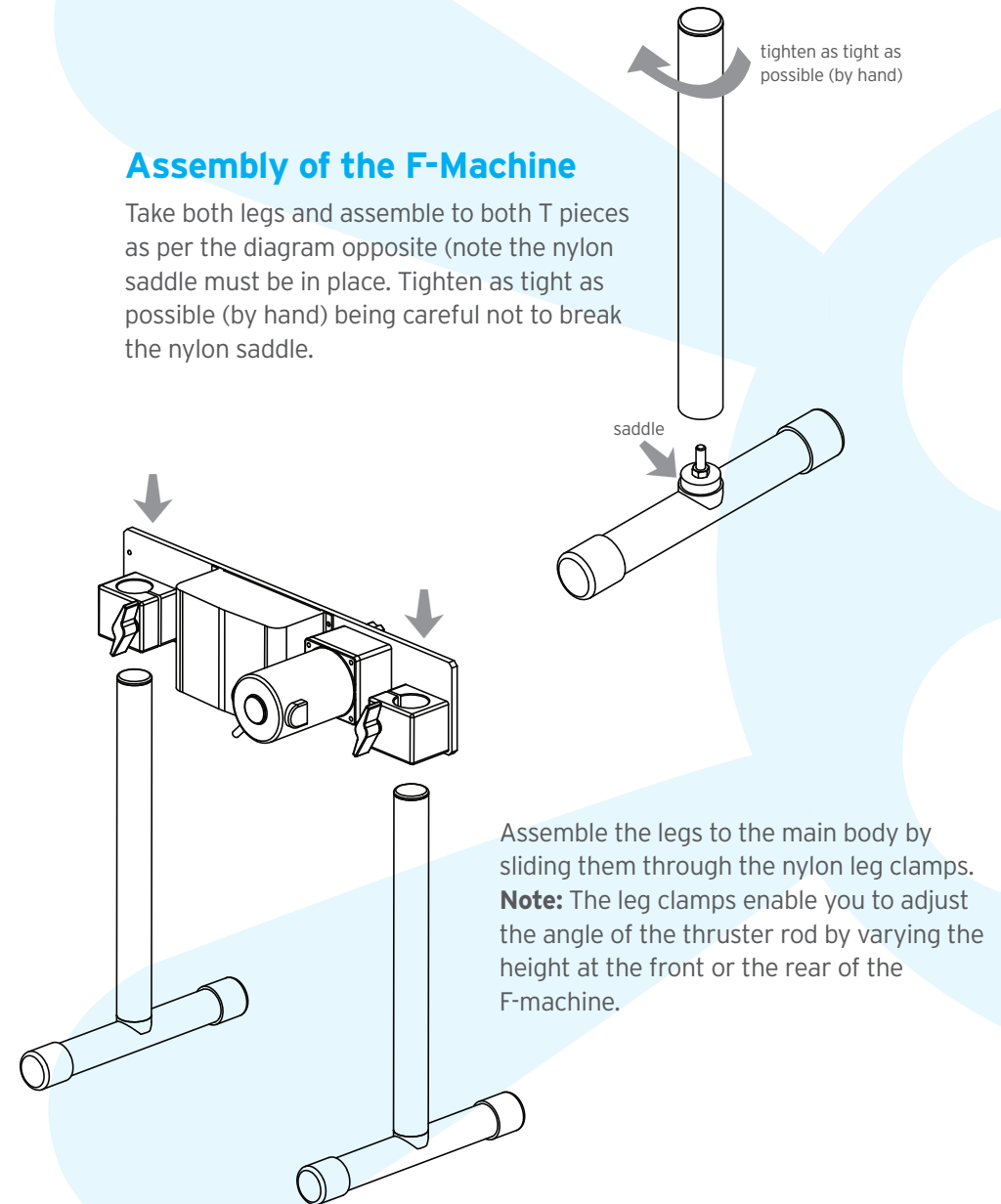
F-Machine Contents

In your F-Machine box you should have the following:

- 1 x main body including motor and electronics housing
- 2 x legs with end caps
- 2 x leg T-pieces with rubber feet and nylon saddle junction
- 1 x thruster rod
- 1 x toy adaptor
- 1 x power lead

Assembly of the F-Machine

Take both legs and assemble to both T pieces as per the diagram opposite (note the nylon saddle must be in place. Tighten as tight as possible (by hand) being careful not to break the nylon saddle.



Assembly continued

Now take the toy adaptor and screw it onto the end of the thruster rod.

Slide the thruster rod into position through its dedicated clamp on the slider block.

tighten using the thumb screw

Set the desired thrust length and tighten using the thumb screw.

Attach the 240 volt adaptor lead to the electronics housing using the appropriate socket.

Operation of the F-machine

You are now ready to test the F-Machine. Make sure the F-Machine is turned off at both the main electronics housing and the remote control using the dedicated on/off switches.

Set the remote control to zero on the annotated speed control dial. Plug in the adaptor lead to a suitable 240 v socket. You are now ready to start thrusting.

Before switching on the main electronics housing using the on/off switch, ensure the following:

- the thruster rod is not likely to come into physical contact with anything it shouldn't
- the slider block is clear to oscillate on its slider rods without anything getting caught (be extra vigilant at all times as the slider block could potentially trap something valuable)
- the crank is free to rotate without hitting anything or catching anything

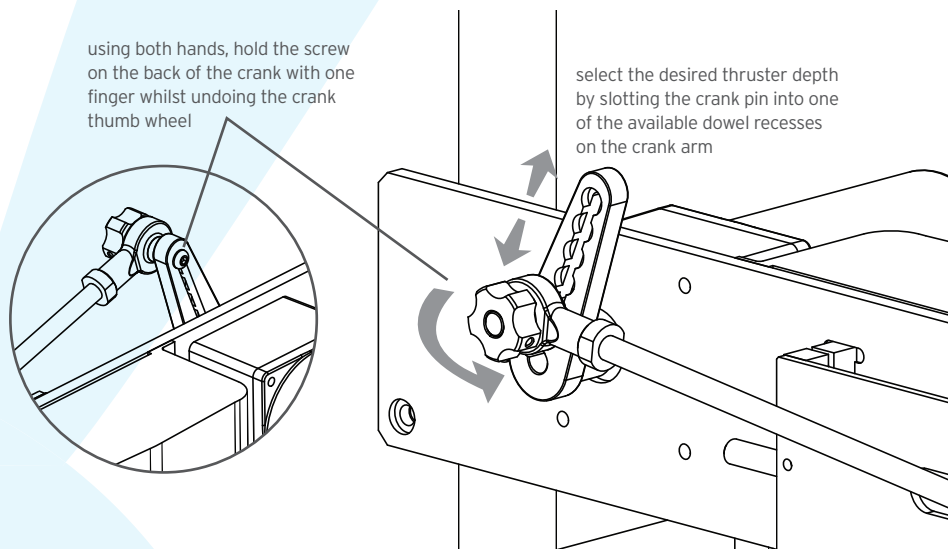
Note: remember the F-Machine is very powerful and extra care must be taken at ALL times during operation to prevent any damage to fingers and other such indices. Also please be careful of long hair, loose clothing, bed linen or anything else which may get tangled in the moving parts, the F-Machine motor is very powerful and may cause injury.

Once you are happy the F-Machine is free to operate without making contact with anything it shouldn't, switch on the on/off switch on the remote control. The F-Machine is now live. Carefully turn the dial to your desired thruster speed (you can choose from any speed from zero to 240 rpm). Now watch in amazement as the thruster rams back and forth in its dominant thrusting manner.

There are many toys available for F-Machine most of which were originally designed for use with 'vac-u-loc' style harnesses; please check your nearest sex toy supplier for the appropriate toys for you and your friends to enjoy.

Adjusting the Thruster

The F-Machine features 'fast-change™' a revolutionary method of quickly changing the thruster travel via the crank arm. You can adjust the thruster travel to one of six positions, each giving a 1 inch increment in thrust depth. Before adjusting the thruster, please ensure you have un-plugged the f-machine from the mains electricity supply. Using both hands, hold the screw on the back of the crank with one finger whilst undoing the crank thumb wheel (see diagram). Once the crank thumb-wheel is loose, you can quickly reset to a different desired thruster depth by slotting the crank pin into one of the available dowel recesses on the crank arm. Once you are happy with the newly selected thruster depth, re-tighten the thumbwheel making sure it's nice and tight and will not come loose during operation.



Fault finding

F-Machine does not start

Check that nothing is jamming the slider block or crank shaft and that the crank and slider are free to move (power off).

Check for damage to the power lead OR to the remote control lead (replace where necessary, though note the remote lead should only be replaced by a qualified electrician).

Check both switches are set to 'on' and that the speed control dial is not set to zero.

Check the lead is firmly in its socket in the electronics housing, that it is firmly plugged into the electrical socket, that the socket has power and that the power is switched on.

Check the fuse in the plug (replace where necessary). Have a qualified electrician remove the electrical housing cover and check the internal fuse (replace where necessary).

If none of the above remedy the issue, please consult a qualified electrician or return the F-Machine to your F-Machine supplier for repair.

F-Machine works intermittently

Check that nothing is jamming the slider block or crank shaft and that the crank and slider are free to move (power off).

Check for damage to the power lead OR to the remote control lead (replace where necessary, though note the remote lead should only be replaced by a qualified electrician).

Check the lead is firmly in its socket in the electronics housing, that it is firmly plugged into the electrical socket

Check the F-Machine motor brushes for signs of wear, replace where necessary

If all above is correct, stop using the F-Machine and consult your supplier or a qualified electrician.

F-Machine makes a 'knocking' or other strange noise

Inevitably the F-machine will make some noise during operation, however if that noise seems to be excessive compared to normal use then carry out the following:

Check the crank arm is tight on the motor shaft.

Check the con-rod is tight both on the crank arm and on the slider block. Also check for excessive wear or play in these joints. Replace worn components as necessary.

Check the slider rods are held tight and are firmly fixed to the main body plate.

Check the slider block plastic slider bearings for play and replace is excessively worn.

Check the thruster rod is tight.

Rock the crank arm back and forth with the con rod disconnected and listen for knocking noise from gearbox. If the noise comes from gearbox then carefully disconnect the motor from the gearbox and re-grease the gearbox (only to be carried out by mechanically competent persons)

F-Machine makes a strange whirring noise

Check gearbox for grease, re-grease where necessary.

General Safety Notes (Important)

Delivery

Immediately check the packaging and F-Machine for any damage which may have been caused in transit. Do not use a damaged F-Machine, consult your supplier.

Please dispose of the packing material properly; we have supplied the packaging plane to enable discreet disposal.

The corrugated cardboard is constructed from recycled paper.

Electrical connection conditions

Please READ the operating instructions before using the F-Machine for the first time.

Please observe the instructions contained in the Operating Instructions.

Please consider all warnings.

MAKE SURE that all power connections (extension cables and the connections between the F-Machine components) have been made properly and in accordance with the manufacturer's instructions. Before making or changing the connections, power off the F-Machine and unplug the mains connection plug.

If you have any doubts regarding the installation, operation or safety of the F-Machine, please REFER to the vendor.

DO NOT COVER the ventilation openings of the F-Machine with items such as newspapers, table clothes, curtains, etc.

Overheating causes damage and shortens the service life of the F-Machine.

Your F-Machine may be damaged if you place it under direct sunshine or close to a heater. Please abstain from using the product in very hot or humid locations or in places where the temperature is likely to decrease below 5°C (41°F). DO NOT PLACE on or near the F-Machine any hot objects or items with open flame such as candles or any night lamps. The high temperature can melt plastic parts and cause a fire.

Never operate electrical F-Machines close to water. Operating such F-Machines, for example, near a bathtub, washbasin, kitchen washbasin, washing basin, wet basement and swimming pool can cause fire or electric shock.

Do not allow your F-Machine to get wet. Never pour any liquids onto the F-MACHINE. Do not operate your F-MACHINE if any solid or liquid substance enters into it. This can cause electric shock and your F-MACHINE may be damaged. Have it checked immediately by qualified personnel.

Keep open flame sources (such as candles) away from F-MACHINE in order to avoid risk of fire.

Operate your F-MACHINE only in the 220 V 50Hz voltage range. Use the AC power cable supplied with the product. If your F-MACHINE is a grounded (Class I) product, then it must certainly be connected to a grounded socket.

The socket into which you plug in the AC power cable or the adaptor must be within easy reach.

Turn off your F-Machine with the ON/OFF button and then unplug it in order to disconnect it from mains. Do not use defective sockets. Make sure that the plug is firmly inserted into the socket. If the plug remains loose, then it can cause fire due to arcing. Refer to an electrician to have your socket replaced.

Make sure that the power cable is not stepped on and that there is no bending at the plug sections, plug heads and F-Machine output point.

Use only the add-ons/accessories specified by the manufacturer.

Use only together with the bases, tripods, brackets or stands specified by the manufacturer or sold along with the product.

Place your F-Machine on a level surface.

Unplug the power cable during thunderstorms or when you will not use your F-Machine for a long period of time.

Consult authorised service personnel for service requirements. Never attempt to repair the F-Machine yourself. Opening the cabinet can expose you to dangerous voltages or other hazardous situations. Service is required in situations such as damage to the power cable of the F-Machine or its plug, water spills or substances falling into the F-Machine, the F-Machine is subjected to rain or moisture, it does not operate normally or it is dropped.

Wipe the F-MACHINE clean with a soft and dry cloth. Wipe dust gently with a soft cloth. Stubborn stains can be cleaned with a cloth slightly moistened with soap and lukewarm water. Never use solvents such as thinner or gasoline for cleaning. Unplug the AC power cable from the socket when cleaning the F-MACHINE. Otherwise, there is the risk of electric shock.

Do not short circuit, dismantle or overheat

Dispose of the F-Machine in accordance with the local laws and regulations in order to protect our environment.

Do not dispose of your F-MACHINE with regular household waste. Observe local laws and regulations for disposal.

Note 1: This is a Class A product. During operation, the F-Machine can cause radio Interference. In this case the user may have to remedy this. Please contact your specialist dealer.

Disclaimer

F-Machine is a FUN-Machine designed for fun use. Where that fun takes you is entirely up to you and entirely at your own risk. We at F-Machine accept no liability or responsibility whatsoever for injury or death caused as a result of the use of the F-Machine.

As already stated in this manual, the F-Machine is a very powerful toy and great care MUST be taken at all times when using it.

If for any reason you are not happy with the F-Machine, then please return to us unused, undamaged, in its original packaging within 28 days of purchase and you will be issued with a full refund.